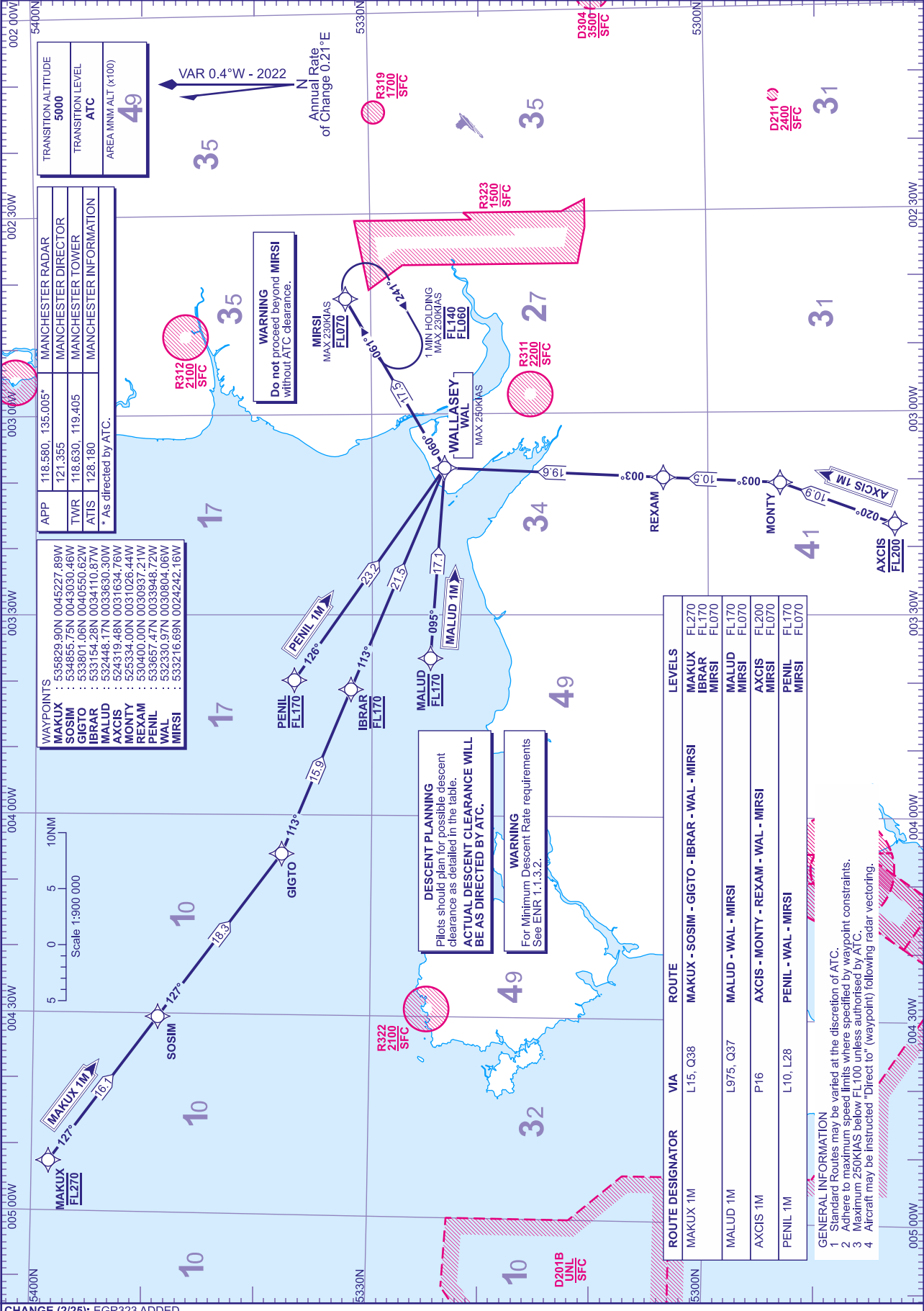


RNAV1 (DME/DME or GNSS)
STANDARD ARRIVAL CHART -
INSTRUMENT (STAR) - ICAO

DISTANCES IN NAUTICAL MILES
TRACKS ARE MAGNETIC
ALTITUDES AND ELEVATIONS ARE IN FEET

MANCHESTER
MAKUX 1M MALUD 1M
AXCIS 1M PENIL 1M



CHANGE (2/25): EGR323 ADDED.

AERO INFO DATE 06 DEC 24

- GENERAL INFORMATION
- Standard Routes may be varied at the discretion of ATC.
 - Adhere to maximum speed limits where specified by waypoint constraints.
 - Maximum 230KIAS below FL100 unless authorised by ATC.
 - Aircraft may be instructed 'Direct to' (waypoint) following radar vectoring.